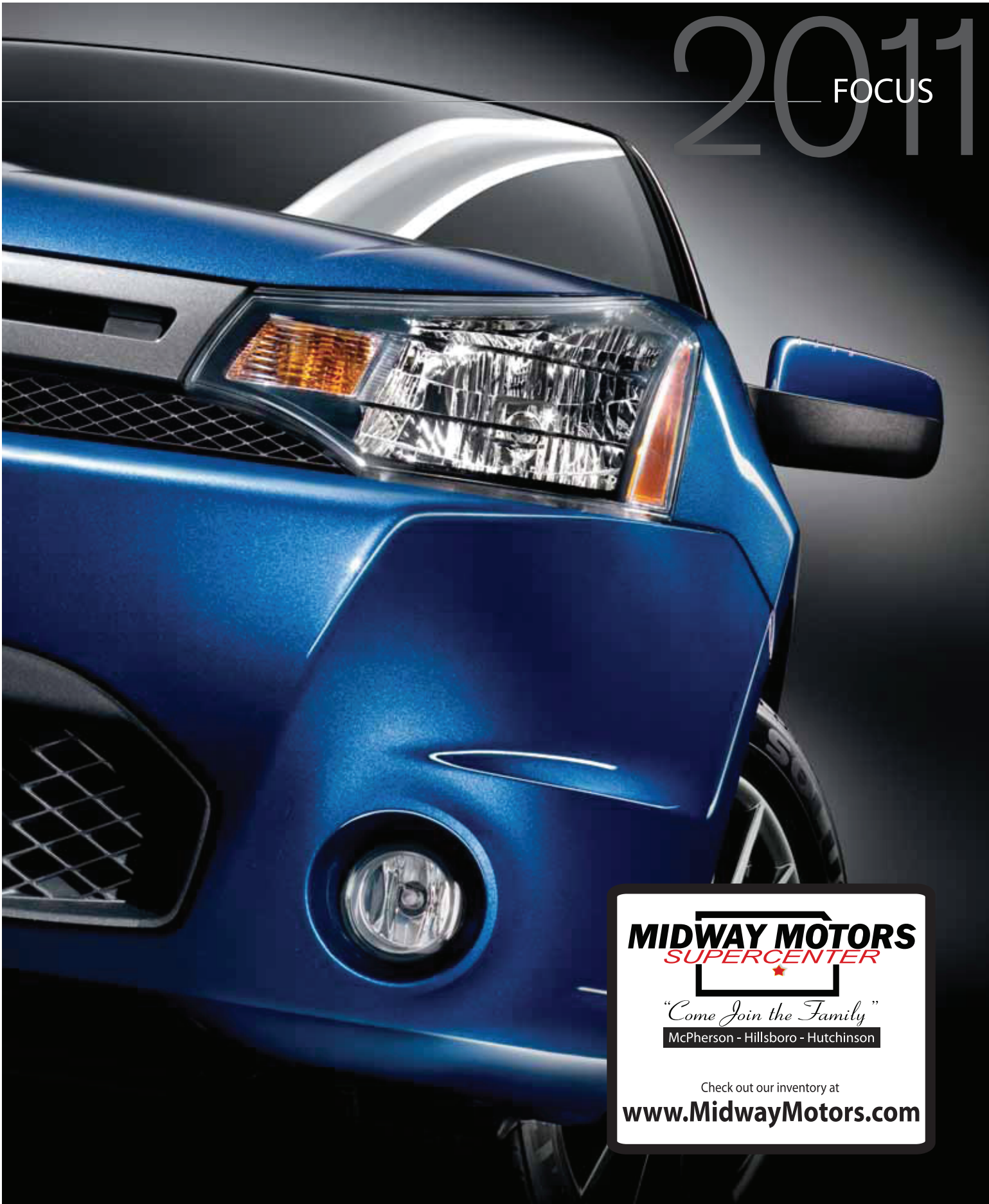


2011

FOCUS



MIDWAY MOTORS
SUPERCENTER

"Come Join the Family"

McPherson - Hillsboro - Hutchinson

Check out our inventory at

www.MidwayMotors.com

fordvehicles.com



Drive one.



Ranked Highest in its Class
in Initial Quality.¹

35 mpg highway.²

And so much more.

The New Focus

35 mpg highway and **Ford-exclusive technologies** drive the new Ford Focus. Loaded with all the comfort, refinement and safety usually found in more expensive sedans, Focus is also the **"Highest-Ranked Compact Car in Initial Quality"**¹ in 2010 – according to J.D. Power and Associates. With 4 trim levels (S, SE, SEL and SES), there's a fun-to-drive Focus that's just right for you. So, save money from the showroom to the fuel station, and get more with Focus. More mpgs. More technology. More quality. More of what you're looking for.



¹The 2010 Ford Focus received the lowest number of problems per 100 vehicles among compact cars in the proprietary J.D. Power and Associates 2010 Initial Quality Study.SM Study based on responses from 82,095 new-vehicle owners, measuring 236 models and measures opinions after 90 days of ownership. Proprietary study results are based on experiences and perceptions of owners surveyed in February–May 2010. Your experiences may vary. Visit jdpower.com. ²EPA-estimated 25 city/35 hwy/29 combined mpg with 5-speed manual transmission.

FOCUS SEL • INGOT SILVER METALLIC • AVAILABLE EQUIPMENT

2011 FOCUS

fordvehicles.com



Drive one.

35
MPG HWY¹



Tech-savvy. Total fun.

Grounded in fun and functionality, the 2011 Ford Focus is hard to beat. Up to **35 mpg hwy**¹ helps stretch your paycheck. Euro-inspired suspensions provide exceptional **handling finesse**. There's plenty of torque from its 140-hp 2.0L Duratec® I-4 engine. And loads of available extras like the **Ford SYNC**® voice-activated, in-vehicle connectivity system and mood-enhancing ambient lighting.

To pump up the visual volume, select the available **Appearance Package** on SE. You'll add 15-in. unique-finish alloy wheels, a decklid spoiler and fog lamps. On the top-of-the-line Focus SES, sport fascias and 17-in. premium painted wheels, along with many other amenities, enhance each drive. Whichever Focus you choose, you'll enjoy it mile after exhilarating mile.

Ford Focus is the only vehicle in its class² to offer these advanced features:

Available Ford SYNC Voice-Activated, In-Vehicle Connectivity System

Standard MyKey® Owner Controls Feature

Available 7-Color Ambient Lighting

¹EPA-estimated 25 city/35 hwy/29 combined mpg with 5-speed manual transmission. ²Class is Small Cars.

FOCUS SEL • BLACK • AVAILABLE EQUIPMENT

2011 FOCUS

fordvehicles.com



Drive one.



Activate phones and tunes.



SYNC. Say the word. Voice-activated **Ford SYNC**[®] is an award-winning, available system that works with your paired Bluetooth[®]-enabled mobile phone and your digital media player. It provides hands-free calling, plays music, delivers Vehicle Health Reports and 911 Assist.[™] With the touch of a button and voice commands, SYNC with **Traffic, Directions and Information** services provides turn-by-turn directions, personalized traffic alerts and more.¹ All at no monthly fee.² SyncMyRide.com has the latest details.



With **SIRIUS**[®] **Satellite Radio**,³ standard on Focus SE and above, you'll enjoy an introductory 6-month subscription to over 130 channels including 100% commercial-free music, plus the best in sports, news, talk and entertainment, 24/7, coast-to-coast. And new for 2011, you can add The Best of XM channels at no charge.⁴

¹Driving while distracted can result in loss of vehicle control. Only use mobile phones and other devices, even with voice commands, when it is safe to do so. Traffic alerts and turn-by-turn directions available in select markets. Standard text messaging and data rates apply. ²For original owner, 3 years. ³Subscription required after introductory 6 months expire. ⁴Call 1-800-351-4517 for details.

FOCUS SES • CHARCOAL BLACK LEATHER TRIM WITH CONTRAST STITCHING • AVAILABLE EQUIPMENT

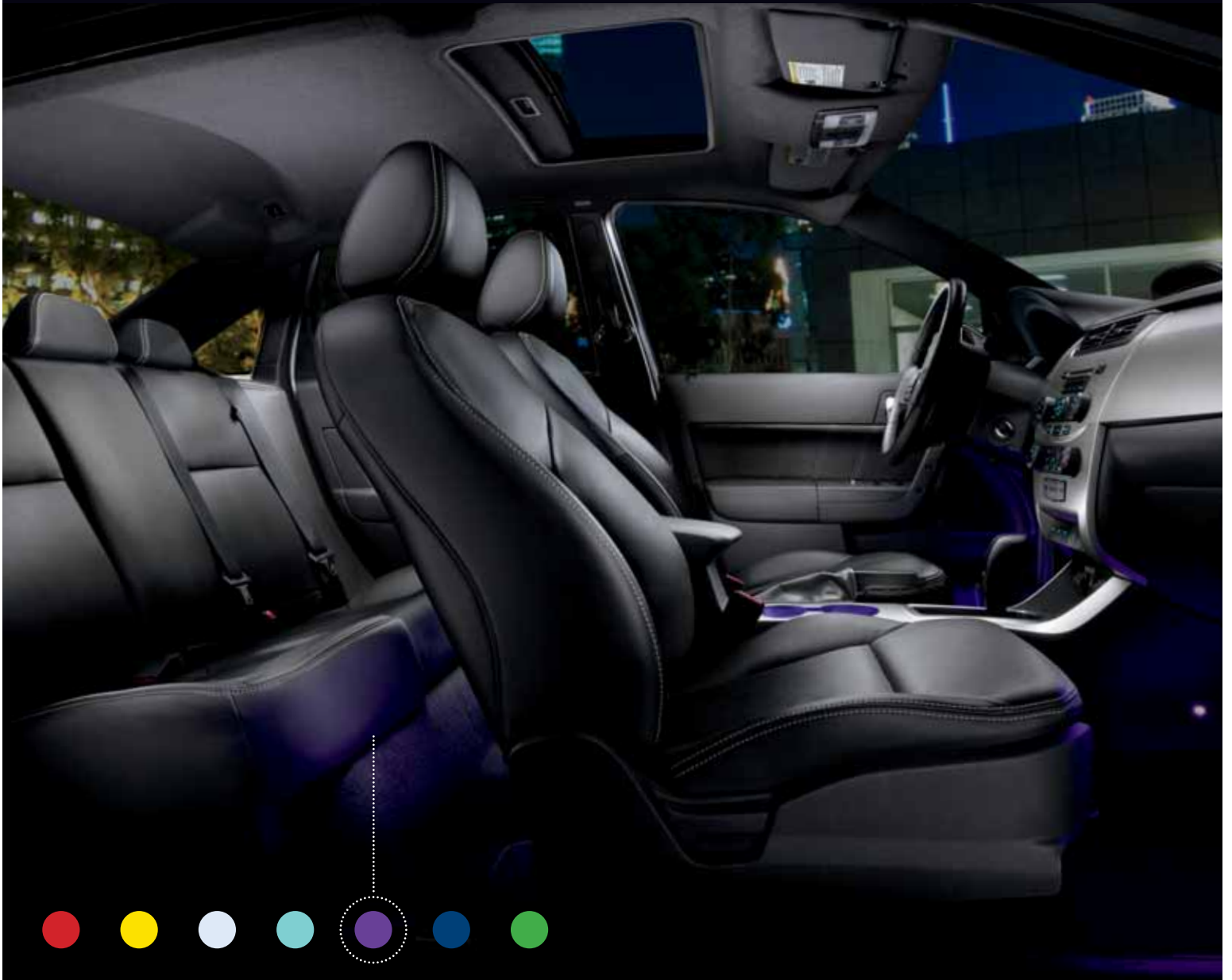
2011 FOCUS

fordvehicles.com



Drive one.

Color your world.



With 7 different color choices, available **ambient lighting** casts a glow in the Focus cupholders and front and rear footwells. It's just one of many unexpected amenities in an interior fine-tuned to reduce NVH (noise, vibration and harshness). Sound-deadening materials help quiet the cabin. An acoustic windshield and aerodynamic design help reduce wind noise. For added style and comfort, available **heated, leather-trimmed front seats** can't be beat. Crystal clear, high-power digital sound is yours with an available Premium Sound System that pumps out 190 watts through 8 speakers and an 8-in. subwoofer. Get accustomed to the finer things in life.



FOCUS SEL • CHARCOAL BLACK LEATHER TRIM WITH CONTRAST STITCHING • OPTIONAL MOON & TUNE PACKAGE

2011 FOCUS

fordvehicles.com



Drive one.



Keep your peace of mind.

With a long list of standard safety features, Ford Focus is well-equipped to help keep you safe. Start with standard **AdvanceTrac® electronic stability control**¹ that includes a **4-wheel Anti-Lock Brake System (ABS)** to help prevent you from skidding off your intended course. Add a rock-solid structure to help protect all on board, and a full complement of **6 airbags** that includes 2 dual-stage front, 2 front-seat side and 2 side-curtain. The **Personal Safety System™** is standing by with its 8 advanced technologies. There's also a **Tire Pressure Monitoring System**, and more. It all contributes to your peace of mind – another standard that's hard to beat.

Positively habit-forming.

The Ford MyKey® owner controls feature lets you program ignition keys to help encourage smart driving habits. Buckling up. Traveling at appropriate speeds. And much more.

¹Remember that even advanced technology cannot overcome the laws of physics. It's always possible to lose control of a vehicle due to inappropriate driver input for the conditions.

FOCUS SE SEDAN • INGOT SILVER METALLIC • AVAILABLE SE APPEARANCE PACKAGE

2011 FOCUS

fordvehicles.com



Drive one.

STANDARD FEATURES

Mechanical

2.0L Duratec® I-4 engine or 2.0L Duratec 20E PZEV I-4 engine

4-wheel Anti-Lock Brake System (ABS)

European-inspired suspension – Front: independent MacPherson strut, stabilizer bar; rear: independent Control Blade™

Power front disc/rear drum brakes

Seating

5-person seating

Front bucket seats with adjustable head restraints

Rear 60/40 split-fold seats with adjustable head restraints

Interior

Air conditioning

AM/FM stereo/single-CD player with MP3 capability, clock and 4 speakers

Auxiliary audio input jack

Courtesy lights with theater-dimming feature

Cupholders (2 front, 1 rear)

Dash-top radio display with outside temperature

Driver message center with dual trip odometer, mpg tracking and real-time fuel efficiency

Front and rear floor mats

Front-door bins and integrated bottle holders

Full-length center floor console with padded armrest

Illuminated Entry System

Map pocket on front-passenger seat back

Powerpoints (2, 12-volt)

Tilt steering column

Visor vanity mirrors

Exterior

Body-color bumpers

Rear-window defroster

Solar-tinted glass

Windshield wipers – Intermittent

Safety & Security

Personal Safety System™ for driver and front passenger includes dual-stage front airbags,¹ safety belt pretensioners, safety belt energy-management retractors, safety belt usage sensors, driver's seat position sensor, crash severity sensor, restraint control module and Front-Passenger Sensing System

Front-seat side airbags¹

Side-curtain airbags¹

3-point safety belts for all 5 seating positions

AdvanceTrac® electronic stability control

Battery saver

Belt-Minder® front safety belt reminder

Child-safety rear door locks

LATCH – Lower anchors and tether anchors for child-safety seats

MyKey® owner controls feature

Remote Keyless Entry System with trunk release (2 key fobs)

SecuriLock® Passive Anti-Theft System

Tire Pressure Monitoring System (excludes spare)

¹Always wear your safety belt and secure children in the rear seat.

Horsepower, Torque & EPA-Estimated Fuel Economy

2.0L I-4 Engine

Horsepower	140 @ 6,000 rpm
Torque (lb.-ft.)	136 @ 4,250 rpm
Manual	25 mpg city/35 hwy/29 combined
Automatic	25 mpg city/34 hwy/28 combined

2.0L 20E PZEV Engine

Horsepower	136 @ 6,000 rpm
Torque (lb.-ft.)	133 @ 4,250 rpm
Manual	25 mpg city/35 hwy/29 combined
Automatic	25 mpg city/34 hwy/28 combined

Dimensions & Capacities

Exterior

Wheelbase	102.9"
Length	175.0"
Height	58.6"
Width – Excluding mirrors	67.8"
Width – Including mirrors	78.4"

Interior

Front

Head room	39.2"
Shoulder room	53.4"
Hip room	50.4"
Leg room	41.7"

Rear

Head room	38.3"
Shoulder room	53.6"
Hip room	50.9"
Leg room	36.1"

Capacities

Passenger volume (cu. ft.)	93.4
Luggage capacity (cu. ft.)	13.8

Dimensions may vary by trim level. Cargo and load capacity limited by weight and weight distribution.

New Vehicle Limited Warranty. We want your Ford Focus ownership experience to be the best it can be. So under this warranty, your new vehicle comes with 3-year/36,000-mile bumper-to-bumper coverage, 5-year/60,000-mile Powertrain Warranty coverage, 5-year/50,000-mile safety restraint coverage, and 5-year/unlimited-mile corrosion (perforation) coverage – all with no deductible. Please ask your Ford Dealer for a copy of this limited warranty.

Roadside Assistance. Covers your vehicle for 5 years or 60,000 miles, so you have the security of knowing that help may be only a phone call away should you run out of fuel, lock yourself out of the vehicle or need towing. Your Ford Dealer can provide complete details on all of these advantages.

Ford Credit. Get the ride you want. Whether you plan to lease or finance, you'll find the choices that are right for you at Ford Credit. Ask your Ford Dealer for details or check us out at fordcredit.com.

Ford Extended Service Plan. For a purchase or lease, the Ford Extended Service Plan (ESP) gives you "Peace-of-Mind" protection designed to cover key vehicle components and protect you from the cost of unexpected repairs. Ask your dealer for a Ford ESP, the only service contract backed exclusively by Ford and honored at all Ford Lincoln Mercury dealerships.

Insurance Services. Get Ford Motor Company quality in your auto insurance. Our program offers industry-leading benefits and competitive rates. Call 1-877-367-3847, or visit us at fordvip.com for a no-obligation quote. Insurance offered by American Road Services Company (in CA, American Road Insurance Agency), a licensed agency and subsidiary of Ford Motor Company.

Comparisons based on 2010 competitive models (class is Small Cars), publicly available information and Ford certification data at time of release. Some features discussed may be optional. Vehicles shown may contain optional equipment. Features shown may be offered only in combination with other options or subject to additional ordering requirements or limitations. Dimensions shown may vary due to optional features and/or production variability. Following release of the PDF, certain changes in standard equipment, options and the like, or product delays may have occurred which would not be included in these pages. Your Ford Dealer is the best source for up-to-date information. Ford Division reserves the right to change product specifications at any time without incurring obligations.

Microsoft is a registered trademark of Microsoft Corporation.

The Bluetooth word mark is a trademark of the Bluetooth SIG, Inc.

Subscriptions governed by SIRIUS Terms and Conditions available at sirius.com. Service available in the 48 contiguous United States and D.C. SIRIUS, XM and all related marks and logos are trademarks of SIRIUS XM Radio Inc. and its subsidiaries.

STANDARD FEATURES



S

Rapid Spec 100A

Includes all standard features, plus:

Mechanical

5-speed manual transmission
15-in. steel wheels with silver-painted covers
P195/60R15 low-rolling-resistance tires

Seating

Cloth seats

Interior

Manual windows
Vinyl steering wheel

Exterior

Black door handles
Black manual sideview mirrors
Chrome 2-bar grille
Halogen headlamps



SE

Rapid Spec 200A

Includes select S features, plus:

Mechanical

15-in. aluminum-alloy wheels
Perimeter alarm

Interior

Power windows with one-touch-down driver's window feature
SIRIUS Satellite Radio with introductory 6-month subscription

Exterior

Power sideview mirrors



SEL

Rapid Spec 300A

Includes select SE features, plus:

Mechanical

4-speed automatic transmission
16-in. Euroflange aluminum-alloy wheels
P205/50R16 tires
Enhanced European-inspired front and rear suspensions with rear stabilizer bar

Interior

Ambient lighting
Ford SYNC® Equipment Group with SYNC voice-activated, in-vehicle connectivity system, leather-wrapped steering wheel with cruise and secondary audio controls, and auto-dimming rearview mirror
Instrument cluster includes metallic instrument panel appliqué with bright cluster rings, door release handles and register accents; metallic console top plate; and performance cluster
Leather-trimmed seats with heated front seats

Exterior

Chrome door handles
Chrome exhaust tip
Fog lamps
Power, heated, chrome sideview mirrors



SES

Rapid Spec 400A

Includes select SE features, plus:

Mechanical

17-in. premium dark stainless-painted aluminum wheels
P215/45R17 tires
Performance suspension with larger rear stabilizer bar

Interior

Ambient lighting
Ford SYNC Equipment Group with SYNC voice-activated, in-vehicle connectivity system, leather-wrapped steering wheel with cruise and secondary audio controls, and auto-dimming rearview mirror
Instrument cluster includes metallic instrument panel appliqué with bright cluster rings, door release handles and register accents; metallic console top plate; and performance cluster

Exterior

Body-color door handles
Chrome exhaust tip
Dark-chrome 2-bar grille
Dark-chrome headlamp and taillamp trim
Decklid spoiler
European-inspired front fascia with integrated fog lamps
Power, heated, body-color sideview mirrors

2011 FOCUS

fordvehicles.com



Drive one.

S & SE



FOCUS SE • CHARCOAL BLACK CLOTH



FOCUS SE • BLUE FLAME METALLIC

2011 FOCUS

fordvehicles.com



Drive one.

S & SE OPTIONAL FEATURES

S Available Option

4-speed automatic transmission

S Exterior Colors

Exterior Color	Interior Color
White Suede	●
Sangria Red Metallic	●
Blue Flame Metallic	●
Sterling Gray Metallic	●
Black	●
Natural Neutral Metallic	●

Interior: ● Medium Stone Cloth

SE Available Rapid Spec

Rapid Spec 201A – Ford SYNC® Equipment Group includes SYNC voice-activated, in-vehicle connectivity system, leather-wrapped steering wheel with cruise and secondary audio controls, and auto-dimming rearview mirror

SE Available Options & Packages

4-speed automatic transmission

Cruise control

SE Appearance Package includes 15-in. alloy wheels with unique finish, decklid spoiler and fog lamps

SE Exterior Colors

Exterior Color	Interior Color 1	Interior Color 2
White Suede	●	●
Sangria Red Metallic	●	●
Blue Flame Metallic	●	●
Ingot Silver Metallic	●	●
Sterling Gray Metallic	●	●
Black	●	●
Natural Neutral Metallic	●	●

Interiors: ● Medium Stone Cloth ● Charcoal Black Cloth

INTERIOR



Medium Stone Cloth
Standard on S

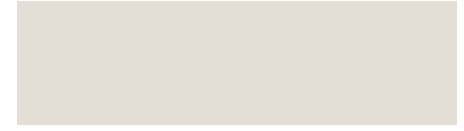


Medium Stone Cloth
Standard on SE



Charcoal Black Cloth
Standard on SE

EXTERIOR



White Suede



Sangria Red Metallic



Blue Flame Metallic



Ingot Silver Metallic



Sterling Gray Metallic



Black



Natural Neutral Metallic



15-in. Steel Wheels
with Silver-Painted Covers
Standard on S



15-in. Aluminum-Alloy Wheels
Standard on SE



15-in. Alloy Wheels with Unique Finish
included with SE Appearance Package

Colors are representative only.
See your dealer for actual paint/trim options.

2011 FOCUS

fordvehicles.com



Drive one.

SEL



CHARCOAL BLACK LEATHER • AVAILABLE EQUIPMENT



STERLING GRAY METALLIC

2011 FOCUS

fordvehicles.com



Drive one.

SEL OPTIONAL FEATURES

Available Rapid Spec

Rapid Spec 301A – **Moon & Tune Package** includes power moonroof with shade, and Premium AM/FM stereo/single-CD player with MP3 capability, 8 speakers, 8-in. subwoofer and 190 watts

Exterior Colors

Exterior Colors	Interior Colors	
White Suede	■	■
Sangria Red Metallic	■	■
Blue Flame Metallic	■	■
Ingot Silver Metallic	■	■
Sterling Gray Metallic	■	■
Black	■	■
Natural Neutral Metallic	■	■

Interiors: ■ Medium Stone Leather ■ Charcoal Black Leather

INTERIOR

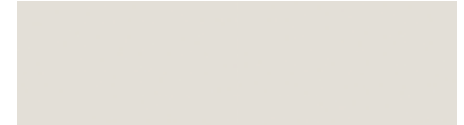


Medium Stone Leather
Standard



Charcoal Black Leather
Standard

EXTERIOR



White Suede



Sangria Red Metallic



Blue Flame Metallic



Ingot Silver Metallic



Sterling Gray Metallic



Black



Natural Neutral Metallic



16-in. Euroflange Aluminum-Alloy Wheels
Standard

Colors are representative only.
See your dealer for actual paint/trim options.

SES



METALLIC INSTRUMENT PANEL APPLIQUÉ



INGOT SILVER METALLIC

2011 FOCUS

fordvehicles.com



Drive one.

SES OPTIONAL FEATURES

Available Rapid Spec

Rapid Spec 401A – **Moon & Tune Package** includes power moonroof with shade, and Premium AM/FM stereo/single-CD player with MP3 capability, 8 speakers, 8-in. subwoofer and 190 watts

Available Options

4-speed automatic transmission

Leather-trimmed seats with heated front seats

Exterior Colors

Sangria Red Metallic

Blue Flame Metallic

Ingot Silver Metallic

Sterling Gray Metallic

Black

Interior Colors

● ● ■ ■

● ● ■ ■

● ● ■ ■

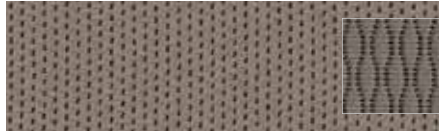
● ● ■ ■

● ● ■ ■

Interiors: ● Medium Stone Cloth ● Charcoal Black Cloth

■ Medium Stone Leather ■ Charcoal Black Leather

INTERIOR



Medium Stone Cloth
Standard



Charcoal Black Cloth
Standard



Medium Stone Leather
Standard



Charcoal Black Leather
Standard

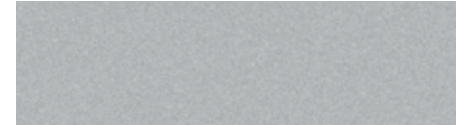
EXTERIOR



Sangria Red Metallic



Blue Flame Metallic



Ingot Silver Metallic



Sterling Gray Metallic



Black



17-in. Premium Dark Stainless-Painted
Aluminum Wheels
Standard

Colors are representative only.
See your dealer for actual paint/trim options.

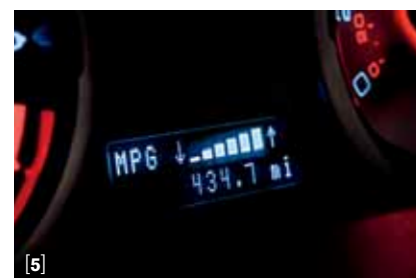
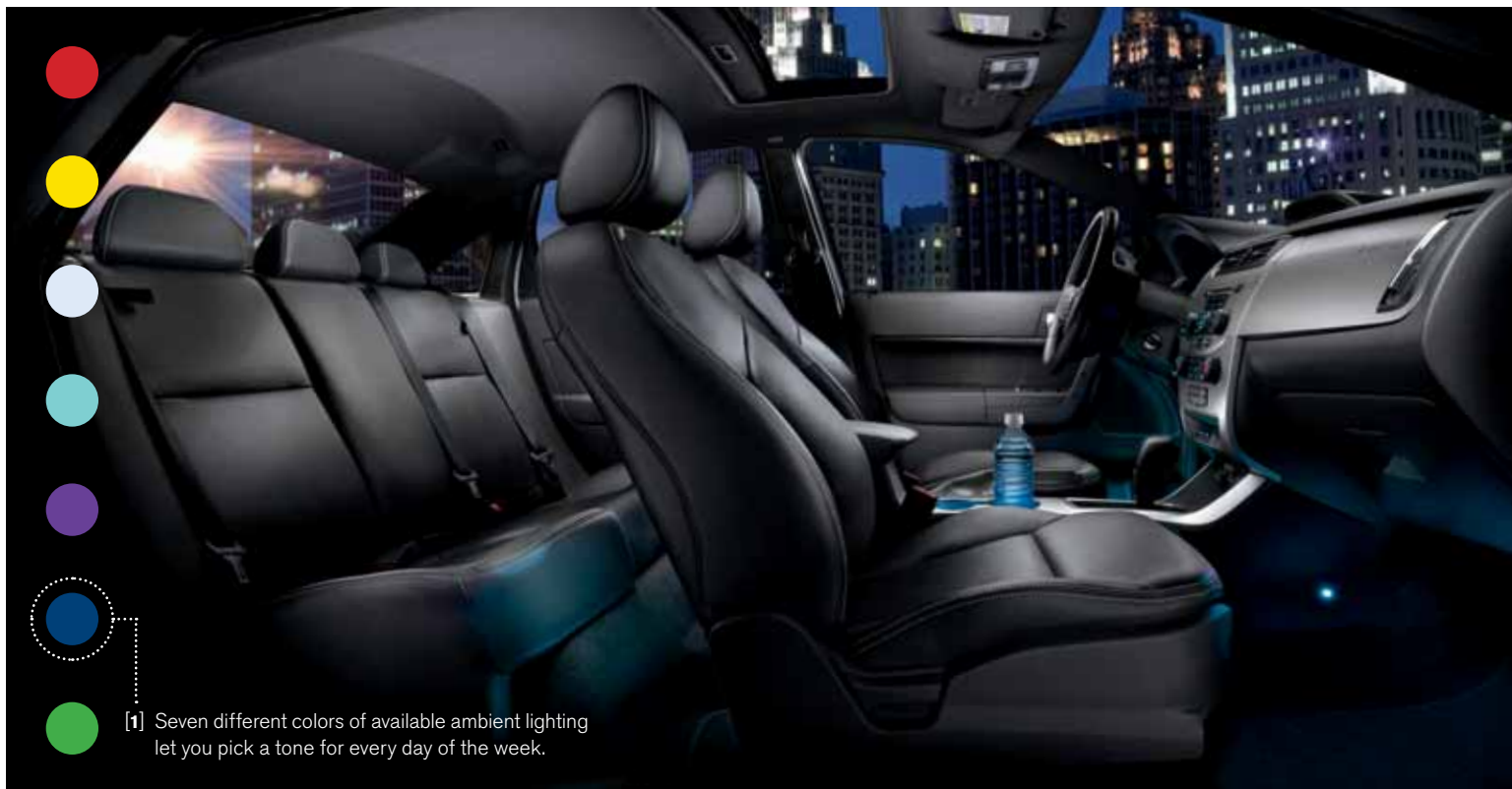
2011 FOCUS

fordvehicles.com



Drive one.

Features



- [2] Get a clear rear view with available power-adjustable, heated sideview mirrors.
- [3] Heated, leather-trimmed front seats are standard on Focus SEL, optional on SES.
- [4] Keep up-to-the-minute tabs on the outside temperature and, on select models, the direction you're headed.
- [5] A standard driver message center with instant readout helps you maximize mpgs.
- [6] Standard rear 60/40 split-fold seats fold forward for extra-long cargo. And there's room for plenty of your stuff in the 13.8-cu.-ft. trunk.
- [7] Adjust the available power moonroof to let in just the right combination of air and sky.

2011 FOCUS

fordvehicles.com



Ford Custom Accessories



Soft Cargo Organizers (Large and Standard Sizes)



Illuminated Door Sill Plates



Remote Start Systems

ALSO AVAILABLE:

APPEARANCE

- Body Kit by 3dCarbon^{®1}
- Chrome Exhaust Tip
- Graphics Kit
- Ford Custom Graphics by Original Wraps,[™] Inc.^{1,2}

ELECTRONICS

- GPS Tracking and Recovery by SmartAlert^{™1}
- Wiper De-Icer and Debris Cleaner by Wiper Shaker¹
- Vehicle Security System
- Forward or Reverse Bumper-Mounted Parking Assist System by EchoMaster^{®1}
- Keyless Entry Keypad

EXTERIOR

- Racks and Carriers by THULE^{®1}
- Side Window Deflectors
- Hood Deflector
- Splash Guards

INTERIOR

- Auto-Dimming Rearview Mirror
- Cargo Area Protector
- Interior Light Kit
- Ash Cup/Coin Holder with or without Lighter Element
- Soft Cargo Cooler Bag
- Cargo Net

WHEELS

- Wheel Locks



All-Weather Floor Mats



Rear Roof Spoiler



Portable Navigation Systems by Garmin^{®1}



Sport Stripes



To learn more about Ford Custom Accessories and to shop online, visit fordaccessories.com.



Genuine Ford Accessories will be warranted for whichever provides you the greatest benefit: 12 months or 12,000 miles (whichever occurs first), or the remainder of your Bumper-to-Bumper 3-year/36,000-mile New Vehicle Limited Warranty. Contact your local Ford Dealer for details and a copy of the limited warranty. Ford Licensed Accessories (FLA) are warranted by the accessory manufacturer's warranty. Ford Licensed Accessories are fully designed and developed by the accessory manufacturer and have not been designed or tested to Ford Motor Company engineering requirements. Contact your Ford Dealer for details regarding the manufacturer's limited warranty and/or a copy of the FLA product limited warranty offered by the accessory manufacturer.

¹Ford Licensed Accessories. ²Available Fall 2010. Garmin is a registered trademark of Garmin Ltd. 3dCarbon is a registered trademark of Moran Motorsports, Inc. SmartAlert is a registered trademark of Inilex, Inc. THULE is a registered trademark of Thule Sweden AB.

2011 FOCUS

fordvehicles.com



Drive one.